

Sandwich pressure regulator with manual adjust knob.

OPERATIONAL BENEFITS

1. Easy mounting : saves on installation costs in comparison with inline regulators.
2. Allows to have compact, all-included units.
3. Large orifice provides high flow.
4. Various functions available.
5. Simple, reliable and solid design.



PR82A
PR63D
PR65C

HOW TO ORDER

INTERNAL PILOT REGULATORS

Gauges	Single pressure Regulator A end Same regulated pressure to ports A and B	Single pressure Regulator B end Same regulated pressure to ports A and B	Dual pressure Regulator A end Regulated pressure to port A *	Dual pressure Regulator B end Regulated pressure to port B *	Dual pressure Dual regulator Regulated pressures to ports A and B *
No gauge	PR250B-ACAA	PR250B-AAAA	PR250B-ADAA	PR250B-ABAA	PR250B-AEAA
Dry Gauge	PR250B-ACCA	PR250B-AACA	PR250B-ADCA	PR250B-ABCA	PR250B-AEEA
Glycerine Gauge	PR250B-ACBA	PR250B-AABA	PR250B-ADBA	PR250B-ABBA	PR250B-AEDA

PRA1A
PRA2D
PRA3C

EXTERNAL PILOT REGULATORS

Gauges	Single pressure Regulator A end Same regulated pressure to ports A and B	Single pressure Regulator B end Same regulated pressure to ports A and B	Dual pressure Regulator A end Regulated pressure to port A *	Dual pressure Regulator B end Regulated pressure to port B *	Dual pressure Dual regulator Regulated pressures to ports A and B *
No gauge	PR250B-BCAA	PR250B-BAAA	PR250B-BDAA	PR250B-BBAA	PR250B-BEAA
Dry Gauge	PR250B-BCCA	PR250B-BACA	PR250B-BDCA	PR250B-BBCA	PR250B-BEEA
Glycerine Gauge	PR250B-BCBA	PR250B-BABA	PR250B-BDBA	PR250B-BBBA	PR250B-BEDA

* - To be used with dual pressure valves.

Valve code is : MAC250A-VXX4-PM-XXYZZ (valves must be external pilot models for either single or dual pressure valves)

Note : regulating pressure range for above models is 7-120 PSI. For other ranges see technical data page.

PR125A
PR250B

TECHNICAL DATA

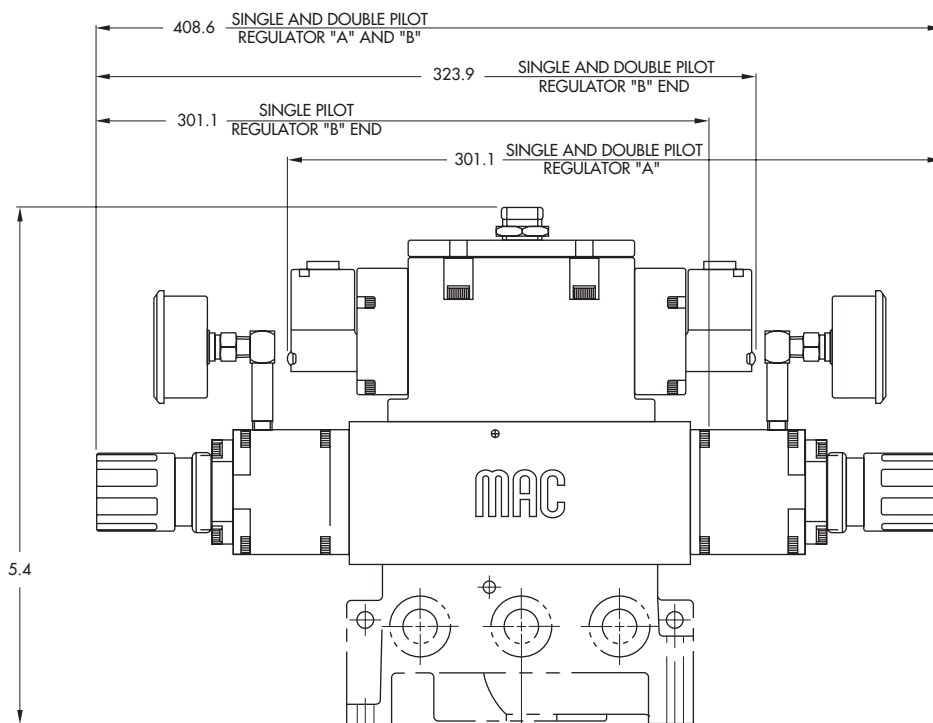
Fluid :	Compressed air, inert gases
Pressure range :	0 to 150 PSI
Regulating range :	7 to 120 PSI (other ranges see below)
Lubrication :	Not required, if used select a medium aniline point lubricant (between 180°F to 210°F)
Filtration :	40 μ
Temperature range :	0°F to 120°F (-18°C to 50°C)
Flow :	(4.7 C _v)

- Spare parts :
- Pressure regulator (less sandwich block) : PR250B-COAA (KNOB)
 - Gauges :
 - N-82016-01 (perpendicular)
 - N-82016-02 (parallel)

Regulating range options : PR250B-XXXA
 └─── Replace by B - 7 to 60 PSI

DIMENSIONS

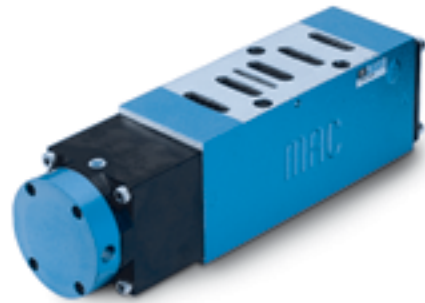
Dimensions shown are metric (mm)



Sandwich pressure regulator with air pilot adjust.

OPERATIONAL BENEFITS

1. Easy mounting : saves on installation costs in comparison with inline regulators.
2. Allows to have compact, all-included units.
3. Large orifice provides high flow.
4. Various functions available.
5. Simple, reliable and solid design.



PR82A
PR63D
PR65C

HOW TO ORDER

INTERNAL PILOT REGULATORS

Gauges	Single pressure Regulator A end Same regulated pressure to ports A and B	Single pressure Regulator B end Same regulated pressure to ports A and B	Dual pressure Regulator A end Regulated pressure to port A *	Dual pressure Regulator B end Regulated pressure to port B *	Dual pressure Dual regulator Regulated pressures to ports A and B *
No gauge	PR250B-DCAA	PR250B-DAAA	PR250B-DDAA	PR250B-DBAA	PR250B-DEAA
Dry Gauge	PR250B-DCCA	PR250B-DACA	PR250B-DDCA	PR250B-DBCA	PR250B-DEEA
Glycerine Gauge	PR250B-DCBA	PR250B-DABA	PR250B-DDBA	PR250B-DBBA	PR250B-DEDA

PRA1A
PRA2D
PRA3C

EXTERNAL PILOT REGULATORS

Gauges	Single pressure Regulator A end Same regulated pressure to ports A and B	Single pressure Regulator B end Same regulated pressure to ports A and B	Dual pressure Regulator A end Regulated pressure to port A *	Dual pressure Regulator B end Regulated pressure to port B *	Dual pressure Dual regulator Regulated pressures to ports A and B *
No gauge	PR250B-ECAA	PR250B-EAAA	PR250B-EDAA	PR250B-EBAA	PR250B-EEAA
Dry Gauge	PR250B-ECCA	PR250B-EACA	PR250B-EDCA	PR250B-EBCA	PR250B-EEEA
Glycerine Gauge	PR250B-ECBA	PR250B-EABA	PR250B-EDBA	PR250B-EBBA	PR250B-EEDA

* - To be used with dual pressure valves.

Valve code is : MAC250A-VXX4-PM-XXYZZ (valves must be external pilot models for both single or dual pressure valves)

PR125A
PR250B

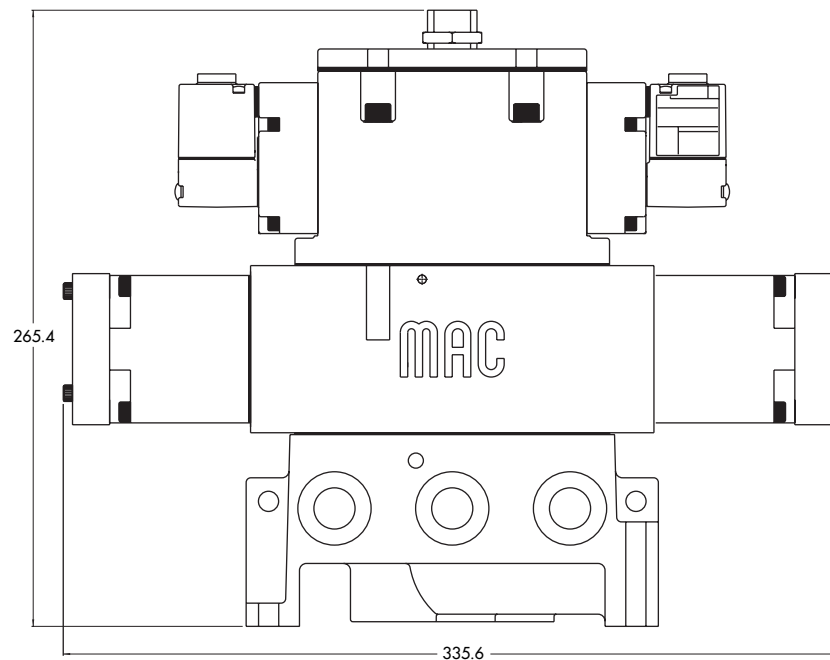
TECHNICAL DATA

Fluid :	Compressed air, inert gases
Pressure range :	0 to 150 PSI
Regulating range :	7 to 120 PSI
Lubrication :	Not required, if used select a medium aniline point lubricant (between 180°F to 210°F)
Filtration :	40 μ
Temperature range :	0°F to 120°F (-18°C to 50°C)
Flow :	(4.7 C _v)

- Spare parts :
- Pressure regulator (less sandwich block) : PR250B-FOAA
 - Gauges : N-82016-01 (0-120 PSI perpendicular)
N-82016-02 (0-120 PSI parallel)

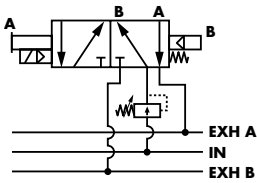
DIMENSIONS

Dimensions shown are metric (mm)



Manual adjust

Single regulator
Single pressure

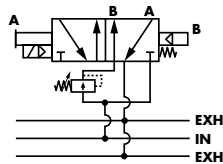


P. 305

P. 309

P. 313

Single regulator
Dual pressure

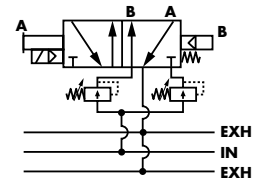


P. 305

P. 309

P. 313

Dual regulator
Dual pressure

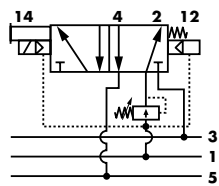


P. 305

P. 309

P. 313

Single regulator
Single pressure

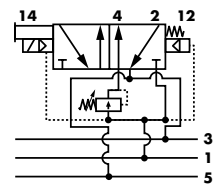


P. 317

P. 321

P. 325

Single regulator
Dual pressure

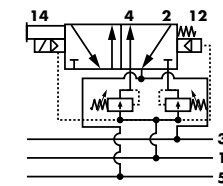


P. 317

P. 321

P. 325

Dual regulator
Dual pressure

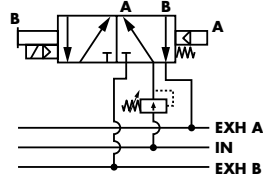


P. 317

P. 321

P. 325

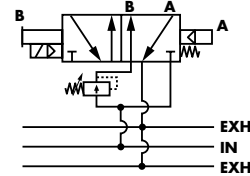
Single regulator
Single pressure



P. 329

P. 333

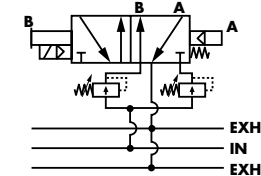
Single regulator
Dual pressure



P. 329

P. 333

Dual regulator
Dual pressure



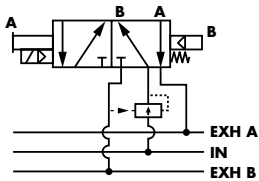
P. 329

P. 333

Air adjust

Series

Single regulator
Single pressure

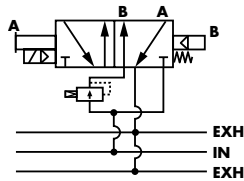


P. 307

P. 311

P. 315

Single regulator
Dual pressure

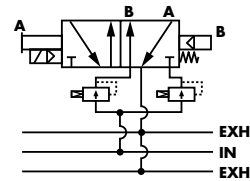


P. 307

P. 311

P. 315

Dual regulator
Dual pressure



P. 307

P. 311

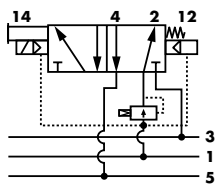
P. 315

PR82A

PR63D

PR65C

Single regulator
Single pressure

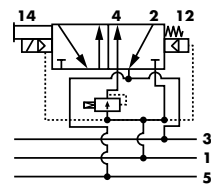


P. 319

P. 323

P. 327

Single regulator
Dual pressure

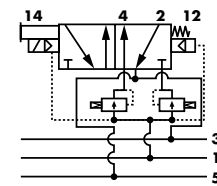


P. 319

P. 323

P. 327

Dual regulator
Dual pressure



P. 319

P. 323

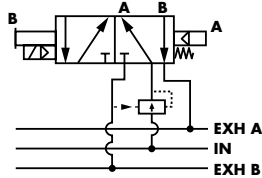
P. 327

PRA1A

PRA2D

PRA3C

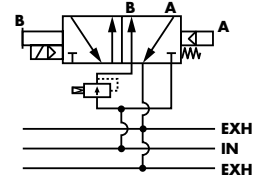
Single regulator
Single pressure



P. 331

P. 335

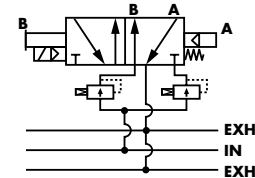
Single regulator
Dual pressure



P. 331

P. 335

Dual regulator
Dual pressure



P. 331

P. 335

PR125A

PR250B