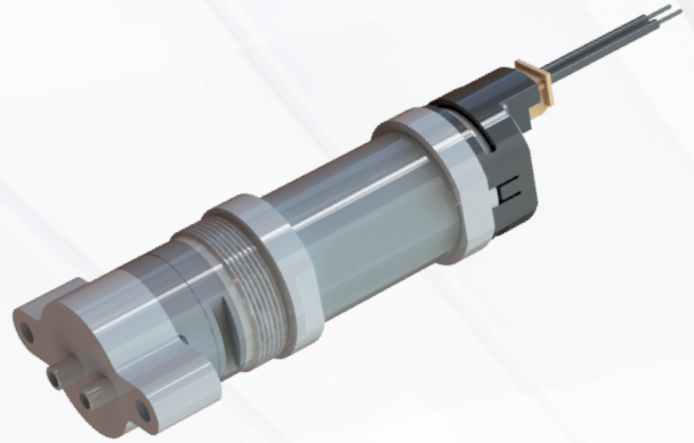


MAC Valves Bullet Valve® Pump

Innovative technology for high precision

- Fixed dosing volume
- High frequency
- Fast response time
- Repeatability from cycle to cycle
- Adaptable for different liquid compositions
- Self priming
- Inline or base mount
- BV14 & BV21 Size coils & diaphragms
- Variety of metals / plastic & rubber compounds
- Liquid or gas



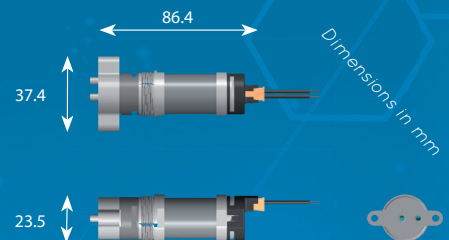
MAC Bullet Valve Pump

BULLET VALVE PUMP SPECS.

Wattage:	1.0 – 16.0
Suction Pressure:	Up to 0.25 Bar (air)
Output Pressure:	Up to 0.35 Bar (air), up to 0.8 Bar (water)
Flow:	Up to 100 ml/min (water)
Accuracy:	3%

* The above mentioned data are based on the test of a new valve as per the conditions described in the MAC Valves test procedures, assembly instructions and modification

DIMENSIONAL DRAWING (BV21 size shown)



MATERIAL

Body	
Brass	316 Stainless Steel
Nickel Plated Brass	Delrin
303 Stainless Steel	PEEK (FDA & NSF)

Rubber	
Nitrile (FDA Nitrile)	EPDM
Silicone (FDA)	Aflas
FKM (Viton, Viton ETP, FDA Grade)	FFKM

MAC Valves - Highly engineered solutions for the highest performing applications since 1948



YOUTUBE

MAC Valves Inc, Wixom, Michigan - MAC Valves Inc, Dundee, Michigan
 MAC Valves Europe Inc, Liège, Belgium - MAC Valves Asia Inc, Taiwan

To find your local distributor, visit www.macvalves.com

