

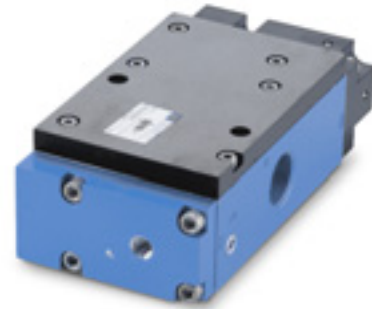


# R e m o t e a i r v a l v e s

Function	Port size	Flow (Max)	Individual mounting	Series
<b>3/2</b>	<b>3/4" - 1"</b>	<b>20.0 C<sub>v</sub></b>	Inline	

### OPERATIONAL BENEFITS

1. Balanced spool, immune to variations of pressure.
2. Powerful return forces thanks to the combination of mechanical and air springs.
3. Bonded spool with minimum friction, shifting in a glass like finished bore.
4. Wiping effect eliminates sticking.
5. Long service life.



400

**67**

69

ISO 2

ISO 3

### HOW TO ORDER

Port size	Pilot air	Single Operator		Double Operator	
		NO Valve	NC Valve	NO Valve	NC Valve
<b>3/4" NPTF</b>	Internal	67A-C3-ARA-RA	67A-A3-ARA-RA	67A-D4-ARA-RA	67A-B4-ARA-RA
<b>1" NPTF</b>		67A-C3-BRA-RA	67A-A3-BRA-RA	67A-D4-BRA-RA	67A-B4-BRA-RA
<b>3/4" NPTF</b>	External	67A-C3-ARB-RE	67A-A3-ARB-RE	-	-
<b>1" NPTF</b>		67A-C3-BRB-RE	67A-A3-BRB-RE	-	-

Note : Designation 'RE' required on remote air models with main valve pressures of vacuum to 20 PSI.

'RE' provides an external pilot and should have a pressure range of 20 - 75 PSI. Since the external pilot supplies the air spring, it must not exceed the remote air pilot pressure.

**TECHNICAL DATA**

<b>Fluid :</b>	Compressed air, vacuum, inert gases
<b>Pressure range :</b>	Vacuum to 150 PSI
<b>Air signal pressure :</b>	20 to 150 PSI (must be $\geq$ main valve pressure)
<b>Lubrication :</b>	Not required, if used select a medium aniline point lubricant (between 180°F to 210°F)
<b>Filtration :</b>	40 $\mu$
<b>Temperature range :</b>	0°F to 120°F (-18°C to 50°C)
<b>Flow :</b>	3/4" : (14.5 C <sub>v</sub> ) - 1" : (20.0 C <sub>v</sub> )

Options : • BSPP threads

**DIMENSIONS**

Dimensions shown are metric (mm)

