

Individual mounting

sub-base	
----------	--

Series

Manifold mounting

sub-base	
----------	--

**1100**

**55**

**56**

**57**

**58**

**59**

**700**

**900**

**82**

**6300**

**6500**

**6600**

**2700**

**1800**

**ISO 1**

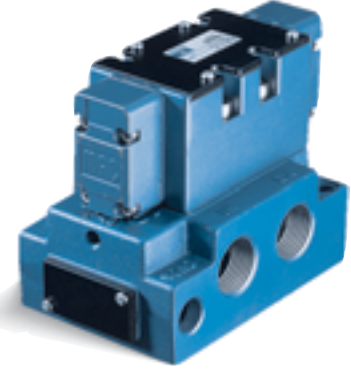
**ISO 2**

**ISO 3**

Function	Port size	Flow (Max)	Individual mounting	Series
<b>4/2 - 4/3</b>	<b>3/4" - 1"</b>	<b>9.6 C<sub>v</sub></b>	sub-base	

**OPERATIONAL BENEFITS**

1. Balanced spool, immune to variations of pressure.
2. Short stroke with high flow.
3. The piston (booster) provides maximum shifting forces.
4. Powerful return thanks to the combination of mechanical and air springs.
5. Bonded spool with minimum friction, shifting in a glass-like finished bore.
6. Wiping effect eliminates sticking.
7. Low leakage rate.



- 1100
- 55
- 56
- 57
- 58
- 59
- 700
- 900
- 82
- 6300
- 6500
- 6600**
- 2700
- 1800
- ISO 1
- ISO 2
- ISO 3

**HOW TO ORDER**

Port size	4/2 Single operator	4/2 Double operator	4/3 Closed center	4/3 Open center	4/3 Pressure center
<b>Valve less base</b>	6612A-000-RA	6622A-000-RA	6632A-000-RA	6642A-000-RA	6652A-000-RA
<b>Sub-base 3/4" NPTF</b>	6612A-231-RA	6622A-241-RA	6632A-241-RA	6642A-241-RA	6652A-241-RA
<b>Sub-base 1" NPTF</b>	6612A-331-RA	6622A-341-RA	6632A-341-RA	6642A-341-RA	6652A-341-RA

**OPTIONS**

6612A-231-RA  
Dual pressure valves : replace by 4.

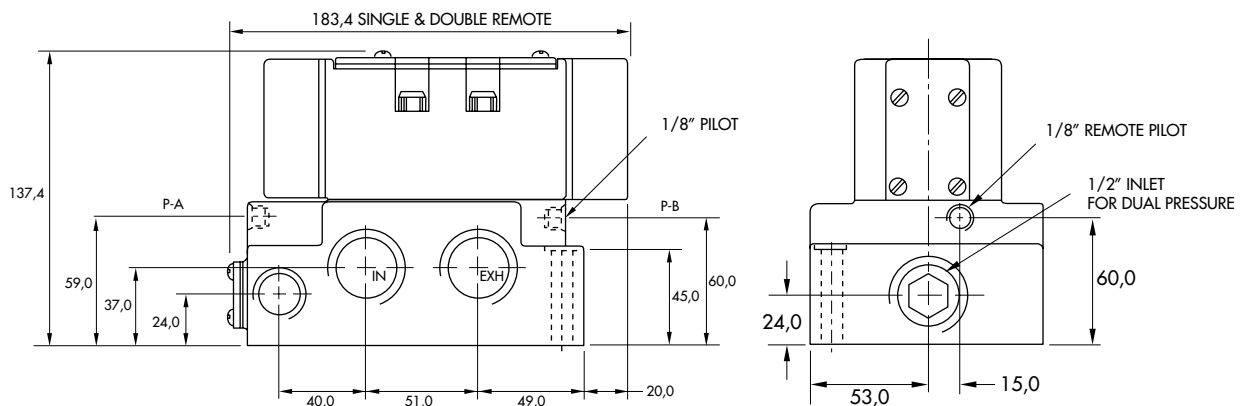
**TECHNICAL DATA**

<b>Fluid :</b>	Compressed air, vacuum, inert gases
<b>Pressure range :</b>	Vacuum to 150 PSI
<b>Air signal pressure :</b>	Single operator and 3 positions : 25 to 150 PSI $\geq$ main valve pressure      Double operator : 10 to 150 PSI
<b>Lubrication :</b>	Not required, if used select a medium aniline point lubricant (between 180°F to 210°F)
<b>Filtration :</b>	40 $\mu$
<b>Temperature range :</b>	0°F to 120°F (-18°C to 50°C)
<b>Flow (at 6 bar, <math>\Delta P=1</math>bar) :</b>	3/4" : (9.0 C <sub>v</sub> ), 1" : (9.6 C <sub>v</sub> )

- Spare parts :      • Remote air operator : R-A3004. • Pressure seal between valve and base : 16436. • Mounting screw valve to base (x4) : 35416.
- Options :            • BSPP threads.

**DIMENSIONS**

Dimensions shown are metric (mm)



Function	Port size	Flow (Max)	Manifold mounting	Series
<b>4/2 - 4/3</b>	<b>3/4" - 1"</b>	<b>9.6 C<sub>v</sub></b>	sub-base	

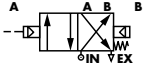
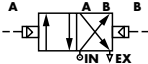
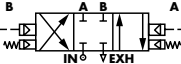
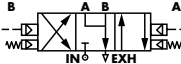
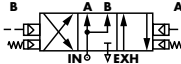
**OPERATIONAL BENEFITS**

1. Balanced spool, immune to variations of pressure.
2. Short stroke with high flow.
3. The piston (booster) provides maximum shifting forces.
4. Powerful return thanks to the combination of mechanical and air springs.
5. Bonded spool with minimum friction, shifting in a glass-like finished bore.
6. Wiping effect eliminates sticking.
7. Low leakage rate.



- 1100
- 55
- 56
- 57
- 58
- 59
- 700
- 900
- 82
- 6300
- 6500
- 6600**
- 2700
- 1800
- ISO 1
- ISO 2
- ISO 3

**HOW TO ORDER**

Port size	4/2 Single operator	4/2 Double operator	4/3 Closed center	4/3 Open center	4/3 Pressure center
					
<b>Valve less base</b>	6612A-000-PM-RA11	6622A-000-PM-RA11	6632A-000-PM-RA11	6642A-000-PM-RA11	6652A-000-PM-RA11
<b>Sub-base 3/4" NPTF</b>	6612A-431-PM-RA11	6622A-441-PM-RA11	6632A-441-PM-RA11	6642A-441-PM-RA11	6652A-441-PM-RA11
<b>Sub-base 1" NPTF</b>	6612A-531-PM-RA11	6622A-541-PM-RA11	6632A-541-PM-RA11	6642A-541-PM-RA11	6652A-541-PM-RA11

**OPTIONS**

6612A-XXX-PM-RA11  
 For dual pressure valves, replace by 4.

Fastening kit : N-66002-01.

